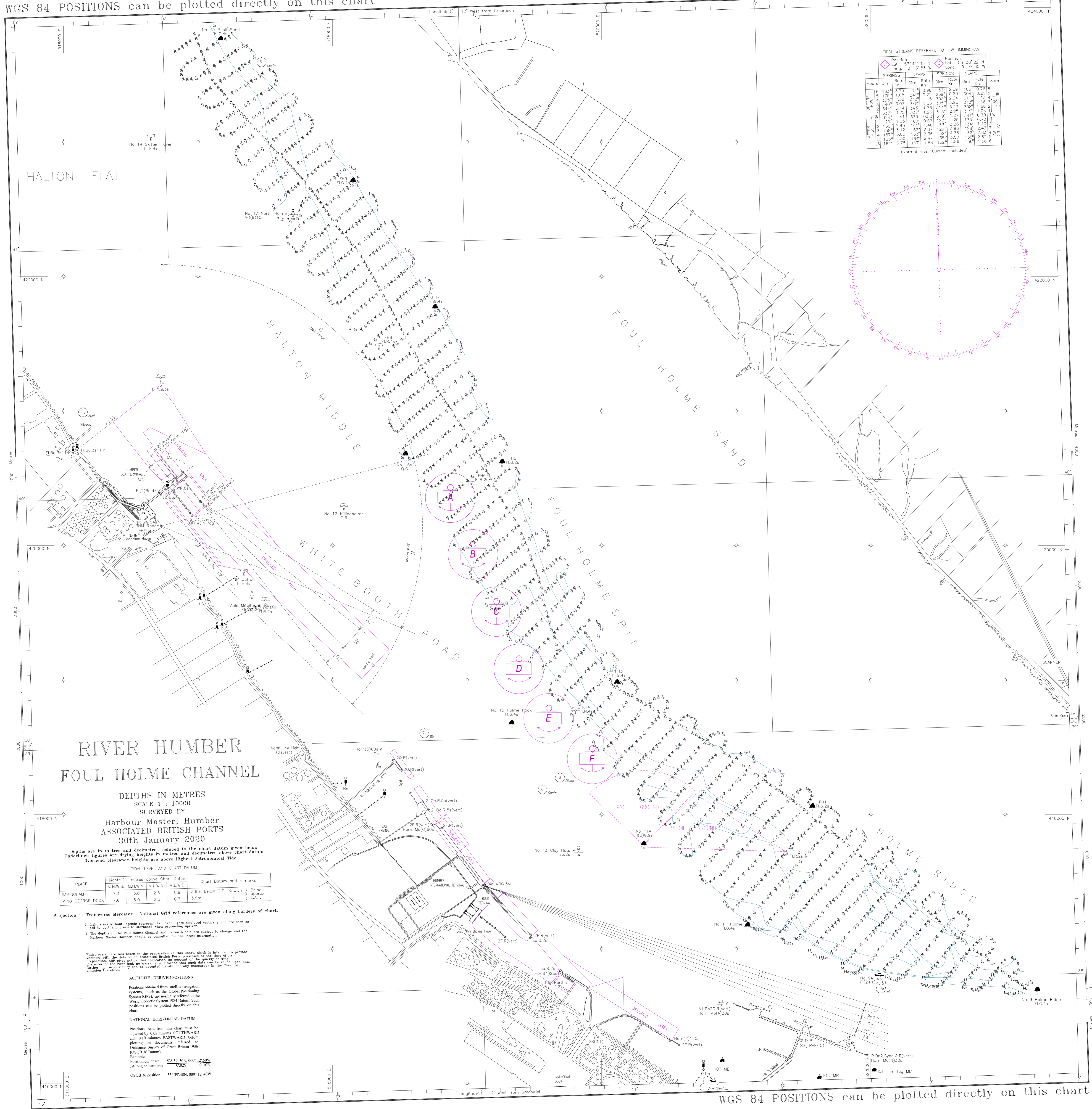


WGS 84 POSITIONS can be plotted directly on this chart

© Copyright 2020. All rights reserved. No part of this product may be reproduced in any form (including photocopying or by electronic means) without prior permission.



TIDAL STREAMS REFERRED TO H.W. IMMINGHAM

Position	Lat. 53° 41' 35" N Long. 0° 11' 55" W				Position				Position
	SPRINGS		NEAPS		SPRINGS		NEAPS		
Hours	Dirn	Rate Kn	Dirn	Rate Kn	Dirn	Rate Kn	Dirn	Rate Kn	Hours
BEFORE	163°	3.25	171°	0.98	132°	2.59	100°	0.76	0
BEFORE	175°	1.08	249°	0.22	239°	0.20	004°	0.21	5
BEFORE	355°	2.32	348°	1.15	335°	2.94	310°	1.13	10
BEFORE	340°	3.03	345°	1.53	305°	3.25	313°	1.88	15
BEFORE	344°	3.14	343°	1.76	314°	3.23	306°	1.88	20
BEFORE	337°	3.26	337°	1.26	315°	2.95	319°	1.06	25
BEFORE	324°	1.41	333°	0.53	319°	1.27	341°	0.50	30
BEFORE	133°	1.05	160°	0.57	122°	1.25	130°	0.70	35
BEFORE	160°	2.45	161°	1.46	133°	3.26	134°	1.40	40
BEFORE	158°	3.12	162°	2.07	129°	3.96	128°	2.43	45
BEFORE	157°	3.85	163°	2.36	132°	4.36	132°	2.83	50
BEFORE	155°	4.30	164°	2.47	135°	3.50	135°	2.62	55
BEFORE	164°	3.78	167°	1.88	132°	2.86	136°	1.56	60

(Normal River Current Included)

RIVER HUMBER FOUL HOLME CHANNEL

DEPTHS IN METRES
SCALE 1 : 10000
SURVEYED BY

Harbour Master, Humber
ASSOCIATED BRITISH PORTS
30th January 2020

Depths are in metres and decimetres reduced to the chart datum given below
Underlined figures are drying heights in metres and decimetres above chart datum
Overhead clearance heights are above highest Astronomical Tide

TIDAL LEVEL AND CHART DATUM

PLACE	Heights in metres above Chart Datum				Chart Datum and remarks
	M.H.W.S.	M.H.W.N.	M.L.W.N.	M.L.W.S.	
IMMINGHAM	7.3	5.8	2.6	0.9	3.9m below O.D. Newlyn Being approx. L.A.T.
KING GEORGE DOCK	7.6	6.0	2.5	0.7	

Projection :- Transverse Mercator. National Grid references are given along borders of chart.

- Light stars without legends represent two fixed lights displayed vertically and are seen as red to port and green to starboard when proceeding upriver.
- The depths in the Foul Holme Channel and Halton Middle are subject to change and the Harbour Master, Humber, should be consulted for the latest information.

Whilst every care was taken in the preparation of this Chart, which is intended to provide Mariners with the data which Associated British Ports possessed at the time of its preparation, A.B.P. gives notice that, thereafter, on account of the quickly shifting character of the river bed, no warranty is afforded that such data are or remain upon and, further, no responsibility can be accepted by A.B.P. for any inaccuracy in the Chart or omission therefrom.

SATELLITE - DERIVED POSITIONS

Positions obtained from satellite navigation systems such as the Global Positioning System (GPS), are normally referred to the World Geodetic System 1984 Datum. Such positions can be plotted directly on this chart.

NATIONAL HORIZONTAL DATUM

Positions read from this chart must be adjusted by 0.02 minutes SOUTHWARD and 0.10 minutes EASTWARD before plotting on documents referred to Ordnance Survey of Great Britain 1936 (OSGB 36 Datum).
Example:
Position on chart 53° 39' 50N, 000° 12' 50W
lat/long adjustments 07.02S 01.00E
OSGB 36 position 53° 39' 48N, 000° 12' 40W

WGS 84 POSITIONS can be plotted directly on this chart